



PAUS
...the people who care

WORKLIFTS

GT 16 A

GT 18 A

GT 21 A

MINING AND TUNNELING | LIFTTECH | CONSTRUCTION MACHINES

STRONGER, MORE
STABLE AND MORE
FLEXIBLE IN USE –
EVERY DAY



PAUS OFFERS,
WHAT YOU NEED IN YOUR
DAILY OPERATIONS:

- **Stability and durability in every situation**
- **Sufficient performance and power for every operation**
- **Agile and fast in tight spaces**
- **Reliability and excellent quality**
- **Support in every situation**

A family business with a feel for what is really important

Paus means efficiency, quality and sustainability in true engineering tradition. As a family business, we develop construction machines, mining and tunneling machines and lift technology at our home in Emsbüren, Germany. Our goal: Your success! Paus machines will enable you to continually master even the toughest of challenges.

WORKLIFT

TECHNOLOGY PERFECTED



MAINTENANCE-FRIENDLY

No need to lubricate the telescopic tubes by the use of special polyamid sliding blocks.

PIPEWORK SYSTEM

Only short hose connections are needed thanks to the pipework system. Cost-effective in terms of maintenance and upkeep. All hydraulic lines are easily accessible.

SUPPORT WHEEL VERSIONS

Strong, dual support wheel on all models. Triple support wheel is available for use on loose terrain.

SUPPORT PLATE

Stable, large support plate with built-in monitoring for excellent stability.

BASKET

Aluminium basket including 230 V socket impactproof and shock-resistant control panel

ALUMINIUM PROFILES

High-strength aluminium profiles ensure optimum weight distribution and full basket load even at maximum load.

ROTING ASSEMBLY

Extremely stable rotating assembly, 360° endless rotation.

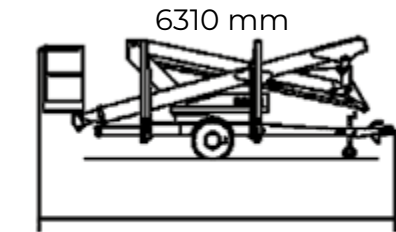
SAFETY

Safety cover for piston rod and stabiliser cylinder hydraulic connections.

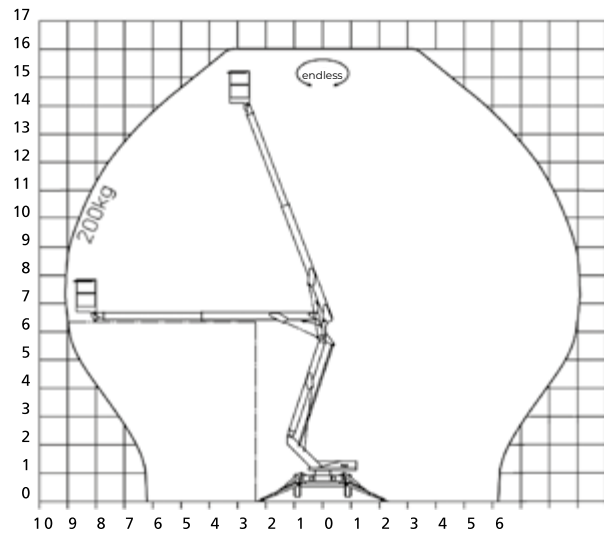
BASIC EQUIPMENT

- Full basket load of 200 kg over the entire working area
- Endless 360° pivot range
- Electro-hydraulic fine control (proportional control) for all movements
- Four hydraulic stabilisers, individually controllable
- Electrical support monitoring
- Excellent manoeuvrability thanks to articulated telescopic principle
- Minimal weight trough the use of aluminium profiles
- Installed components solely from reputable manufacturers
- Safe basket guidance by master/slave cylinder principle
- Joystick operation with pre-selection lever and emergency stop on control panel
- Water-tight and dust-proof control panel in basket
- Stable chassis made of high-strength fine grain steel (GT 16 A and GT 18 A)
- Bullseye level for precise alignment of supports
- Compact single-axle chassis for safety on the road tested to comply with the German Road Traffic Licensing Regulation (StVZO)
- Emergency lowering pump by manuel pump
- Approval as per the Mobil Elevating Work Platforms Standard EN 280

GT 16 A
WORKLIFT



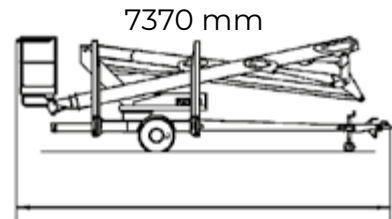
- Articulated telescopic arm
- Telescopic upper arm



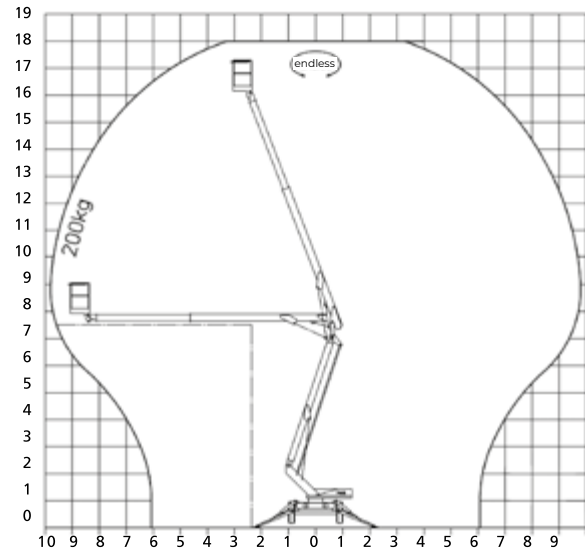
Working height	16.00 m
Maximum platform height	14.00 m
Maximum side reach	9.45 m
Dimensions of working cage (L/W/H)	0.70 m/1.20 m/1.10 m
Payload over the entire work area	200 kg
Pivot range	endless
Support width	4.08 m
Support length	4.29 m
Drive	electro-hydraulic
Voltage supply	230 V, 50 Hz, 16 Amp.
Transport width	2.15 m
Transport height	2.33 m
Transport length	6.31 m
Total weight (basic version)	approx. 1,950 kg



GT 18 A
WORKLIFT



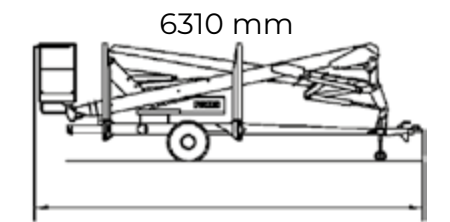
- Articulated telescopic arm
- Telescopic upper arm



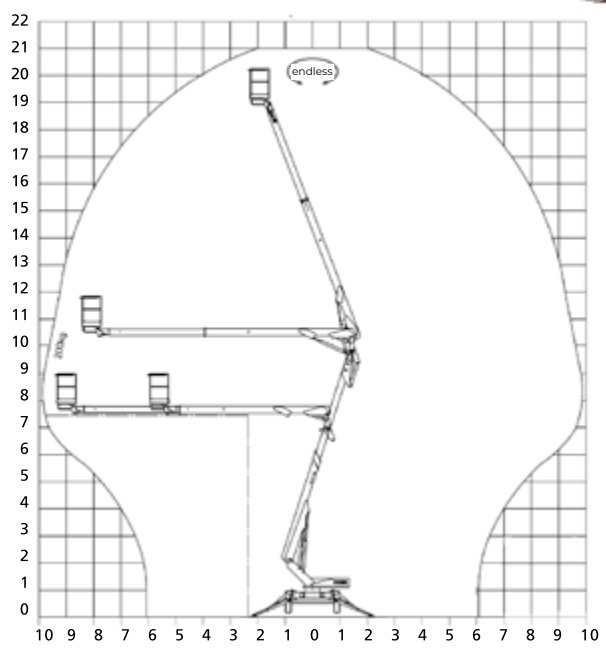
Working height	18.10 m
Maximum platform height	16.10 m
Maximum side reach	10.10 m
Dimensions of working cage (L/W/H)	0.70 m/1.20 m/1.10 m
Payload over the entire work area	200 kg
Pivot range	endless
Support width	4.27 m
Support length	4.39 m
Drive	electro-hydraulic
Voltage supply	230 V, 50 Hz, 16 Amp.
Transport width	2.20 m
Transport height	2.48 m
Transport length	7.37 m
Total weight (basic version)	approx 2,100 kg



GT 21 A
WORKLIFT



- Articulated telescopic arm
- Telescopic upper and lower arm



Working height	21.00 m
Maximum platform height	19.00 m
Maximum side reach	10.00 m
Dimensions of working cage (L/W/H)	0.70 m/1.20 m/1.10 m
Payload over the entire work area	200 kg
Pivot range	endless
Support width	4.20 m
Support length	4.30 m
Drive	electro-hydraulic
Voltage supply	230 V, 50 Hz, 16 Amp.
Transport width	2.10 m
Transport height	2.45 m
Transport length	7.40 m
Total weight (basic version)	approx. 2,500 kg



ACCESSORIES



SPECIAL PAINTING
We can paint the machine to your required colour.



HYDRAULIC HIGH-PERFORMANCE WHEEL DRIVE
Driving on wet and loose soil is also guaranteed thanks to direct transmission of power from the wheel drive.



REMOVABLE CONTROL PANEL
Installed on the turret, the control panel can be used in various ways and permits the platform to be operated from the ground.



ROTATABLE BASKET
Basket can be hydraulically rotated by +/- 60°.



TRIPLE SUPPORT WHEEL
Sturdy triple support wheel for loose terrain.



PIVOTABLE STABILISER
Enables the footprint to be reduced by approx. 90 cm.



AUTOMATIC LEVELLING
Automatic levelling ensures ultrasimple installation and alignment of the platform.



POWER GENERATOR
Sound-insulated generator enables the platform to be used off-grid.

SERVICE

CUSTOMER SERVICE



ONLINE SPARE-PARTS CATALOGUE



TRAININGS



WARRANTIES



SERVICE NETWORK



CONTACT



PAUS CONNECT



PAUS QUICKSUPPORT



WE ARE THERE,
WHERE OUR CUSTOMERS ARE

Maintenance and service:

Repairs and maintenance work are central points in customer service. Paus offers a comprehensive service program to its customers:

- Service on site or in the factory by technicians
- Service by our trained, regional service partners
- Support for customers with technical inquiries through our service consultant

SPARE PARTS

We give high priority to the availability of Paus spare parts. Besides maintenance and service parts, we offer our customers the possibility to purchase spare parts for engines, axles, gearboxes, etc. through us. Furthermore, maintenance and service packages can be called up from us. You are welcome to use our online spare parts catalog for this purpose. This fast and uncomplicated service is guaranteed by our comprehensive concept of disposition, warehousing, and logistics. We maintain stock at the Paus central warehouse in Emsbüren for our customers at any time. Please do not hesitate to contact us for a specific consultation, if necessary, and also at our customer's on-site, if necessary.





**HERMANN PAUS
MASCHINENFABRIK GMBH**

Siemensstraße 1-9
D-48488 Emsbüren
info@paus.de
Tel.: +49 5903 707-0
Fax: +49 5903 707-333

FOLLOW US ON:



WWW.PAUS.DE



WE CARE

As a specialist for complete and special solutions Paus offers an extensive range of machines for mining and tunneling, lift technology and construction machinery since 1968.

Paus means „Quality Made in Germany“.

Our quality management is certified according to ISO 9001.



DIN EN ISO 9001
REG.-NR. 01 0310007



Publication details © Copyright 2022, Hermann Paus Maschinenfabrik GmbH, Emsbüren, Germany. Any form of unauthorised use or reproduction of the content, in whole or in part is prohibited. Illustrations and photos may show features with optional equipment. The specifications printed here are without guarantee. The right is reserved to amend the technical data and the equipment without advance notice. Please contact Hermann Paus Maschinenfabrik GmbH for further information.

Your dealer: